



Adirondack
Park Agency

Department of
Environmental Conservation

Broadalbin Boat Launch

Public Draft Unit Management Plan

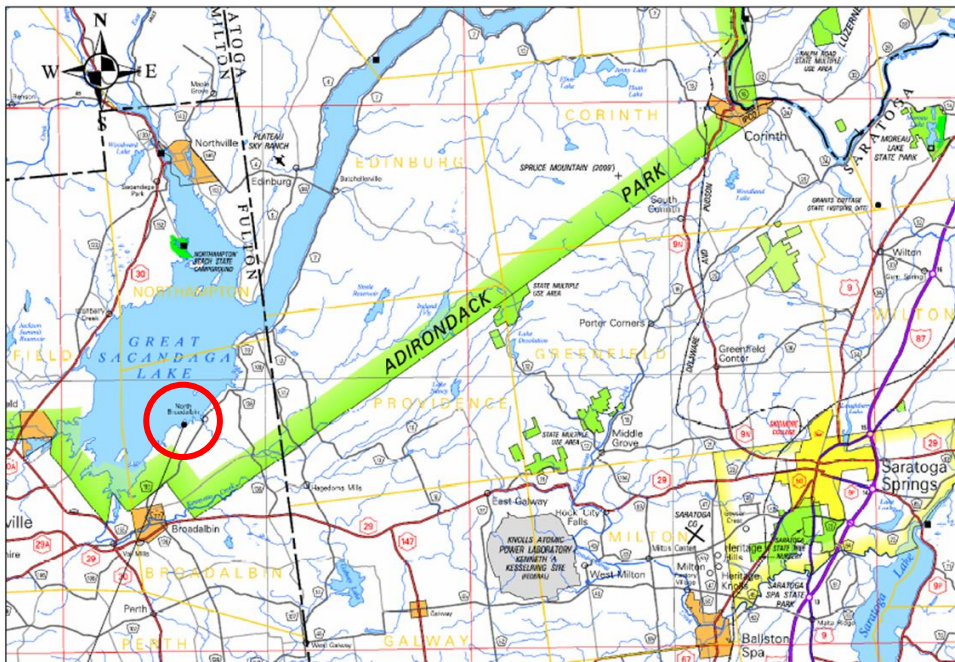
December 15, 2022



Boat Launch Location Overview

Broadalbin Boat Launch Site - Site Location Map

- Town of Broadalbin
- Fulton County
- 14 Acres
- Forest Preserve



BROADALBIN BOAT LAUNCH

Boat Launch Site Overview

Broadalbin Boat Launch Site



Land transferred to DEC
from HRBRRD in 1989

Intensive Use

One of four DEC boat
launches on the lake



0.075 0.0375 0 0.075 Miles



Department of
Environmental
Conservation

Boat Launch Site Overview

Broadalbin Boat Launch Site

Boat Launch

- Constructed 1998
- Operated by DEC

80' wide,
two-lane ramp

Parking for up to 60
vehicles with trailers

FULTON

NYS ITR GIS Program Office



0.075 0.0375 0 0.075 Miles



Department of
Environmental
Conservation

Photos



Entrance from Lakeview Road

Photos



Storage shed for boat decontamination equipment

Photos



Boat launch parking area

Photos



Accessible parking at boat launch

Photos



Boat launch in off-season

Boat Launch Site Overview

Broadalbin Boat Launch Site



0.075 0.0375 0 0.075 Miles



Department of
Environmental
Conservation

Photos



Existing parking area

Photos



Existing parking area

Photos



Existing beach area

Photos



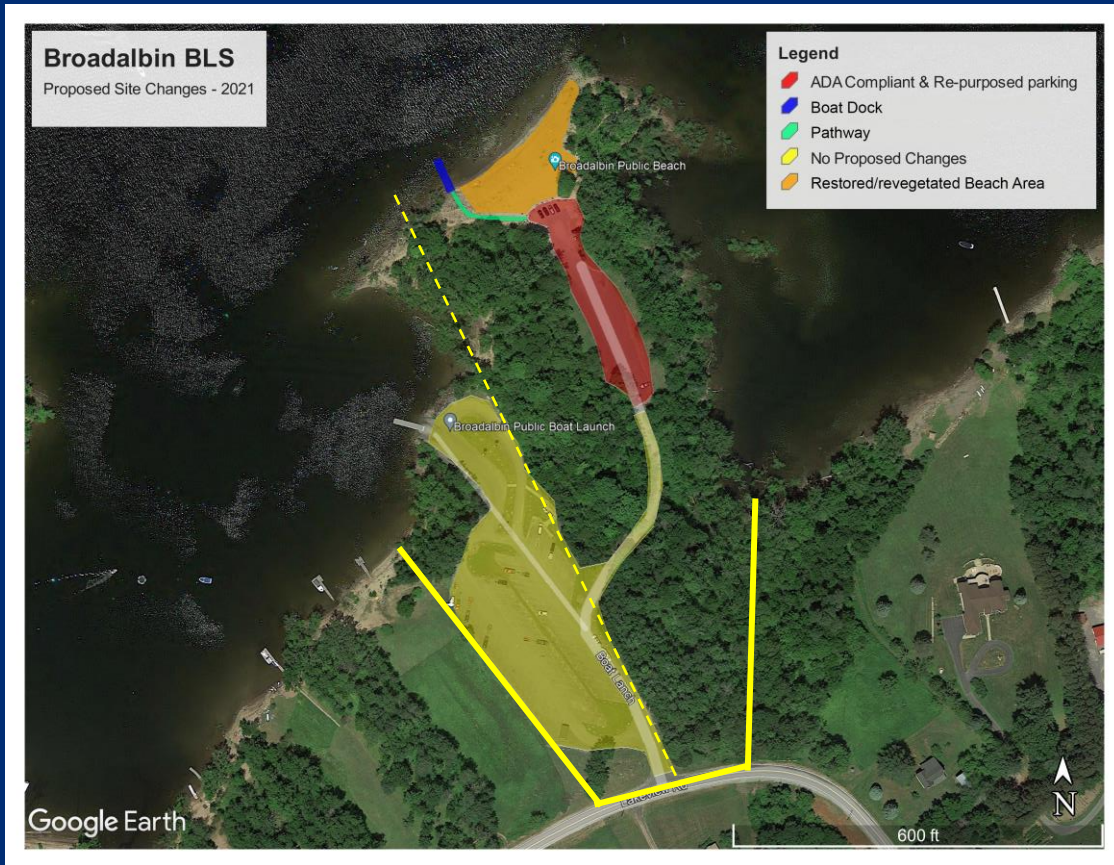
Existing beach area

Photos



Existing beach area

Overview of UMP Proposals



Adirondack Park State Land Master Plan Conformance Review



Guidelines for Management and Use - Basic Guidelines (SLMP pg. 41)

Primary management guideline will be to provide:

- public opportunities for recreation
- in a setting and scale in harmony with the relatively wild and undeveloped character of the Adirondack Park

Guidelines for Management and Use – Basic Guidelines (SLMP pg. 41)

All intensive use facilities should be located, designed and managed:

- to blend with the Adirondack environment;
- to have minimum adverse impact on surrounding state and private lands

Guidelines for Management and Use – Basic Guidelines (SLMP pg. 41)

Construction and development activities will:

- avoid material alteration of wetlands;
- minimize extensive topographic alterations;
- limit vegetative clearing;
- preserve the scenic, natural and open space resources of the intensive use area.

Guidelines for Management and Use: Boat Launching Sites (SLMP pg. 43)

- Sites will only be provided on large lakes (>1,000 acres) where:
 - Current public and private launching opportunities do not meet demand
 - Physical, biological, and social carrying capacity is not exceeded
 - Site or attendant water uses are compatible with surrounding land use classifications and mgmt. guidelines
 - Adverse impacts to nearby state and private lands are avoided
 - Appropriate motor size limitations are provided

Guidelines for Mgmt. and Use Continued: Boat Launching Sites (SLMP pg. 43)

- There are no material adverse impacts on physical, biological, or scenic resources of the water body and surrounding land

DEC & APA Joint Public Comment Period

DEC and APA will be accepting comments until **January 16, 2023** regarding the public draft of the Broadalbin Boat Launch UMP.

Comments may be relayed to:

Megan Phillips

NYSAPA

Deputy Director, Planning

PO Box 99

1133 State Route 86

Ray Brook, NY 12977

Email:

SLMP UMP Comments@apa.ny.gov

(underscores between words)

Rob Fiorentino

NYSDEC

Fisheries Manager, Region 5

232 Golf Course Road

Warrensburg, NY 12885

Email:

r5ump@dec.ny.gov

