



**Adirondack  
Park Agency**

**P2022-0163**

**Lyme Timber Company**

**Agency Meeting: September 2022**

**September 14, 2022**

# Overview

- Background
- Jurisdiction
- Proposal
- Project Site
- Silvicultural Treatments
- Review Standards
- Public Comment

# Background

# Agency Timber Harvest Permits

- Historic Avoidance of Agency Jurisdiction
  - Can lead to poor Silviculture
  - Decrease in forest health and value long term
- Beginning in 2013:
  - Industrial Forestland Managers come forward
  - Communication and Efficiencies
    - » Third Party Certification (FSC and SFI)
    - » NYS Working Forest Conservation Easements
  - Applications are well prepared and well positioned for an efficient Agency review process



# Background - Delegated Authority of DDRP

- Forest Stewardship Council (FSC) and/or Sustainable Forestry Initiative (SFI) Certification
- New York State Working Forest Conservation Easement
- Under 500 acre harvest site
- Absence of difficult resource considerations

# Jurisdiction

# Jurisdiction

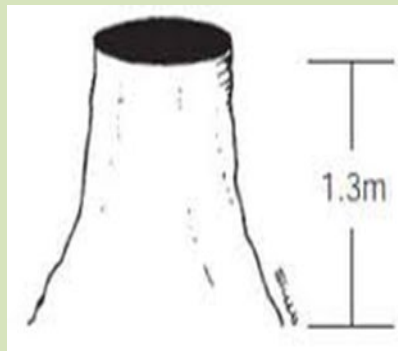
Class A Project in Resource Management  
810(1)(e)(11)

“Timber harvesting that includes a proposed clearcutting of any single unit of land of more than twenty-five acres”

# Jurisdiction

9 NYCRR Part 573.7(a)(1)

cutting of trees over **6" dbh** over any **10-year period**, such that the average residual basal area of such trees after such cutting is less than **30 ft<sup>2</sup> /acre**, measured within the area harvested ...



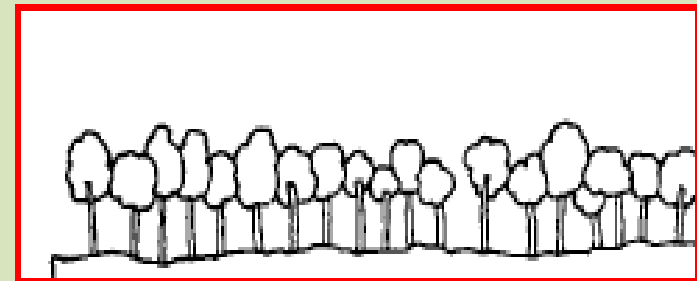
# Proposal

# Proposal

Timber harvest on 643± acre project site, to include two silvicultural treatments:

- 1) Shelterwood removal with reserves (721± acres);
- 2) Free Thinning (102± acres).

# Shelterwood

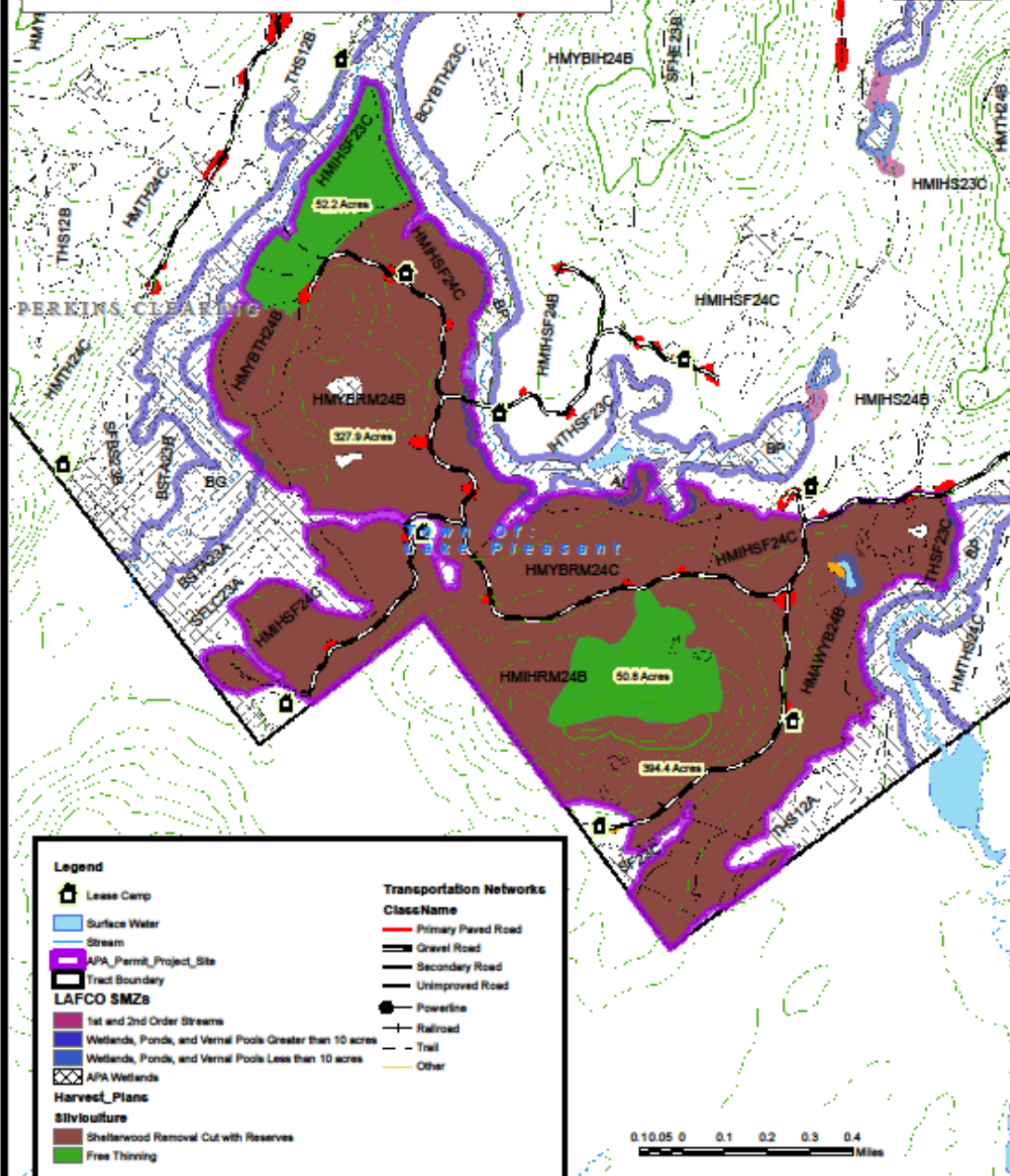


# Thinning





# Mud Lake OSR Clearcut Permit Map Perkins Clearing Tract Town of Lake Pleasant



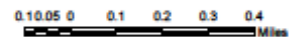
**Legend**

- Lease Camp
- Surface Water
- Stream
- APA\_Permit\_Project\_Site
- Tract Boundary
- LAFCO SMZs**
  - 1st and 2nd Order Streams
  - Wetlands, Ponds, and Vernal Pools Greater than 10 acres
  - Wetlands, Ponds, and Vernal Pools Less than 10 acres
  - APA Wetlands
- Harvest\_Plans**
  - Shelterwood Removal Cut with Reserves
  - Free Thinning

**Transportation Networks**

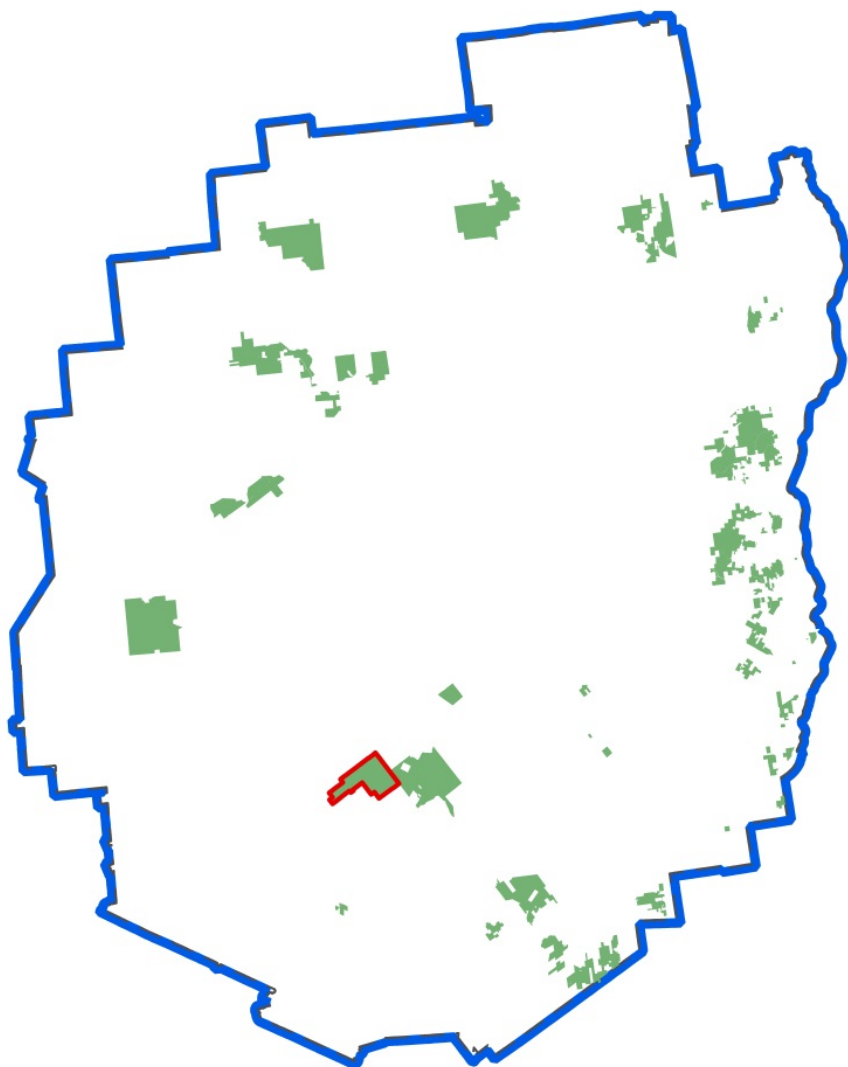
**ClassName**

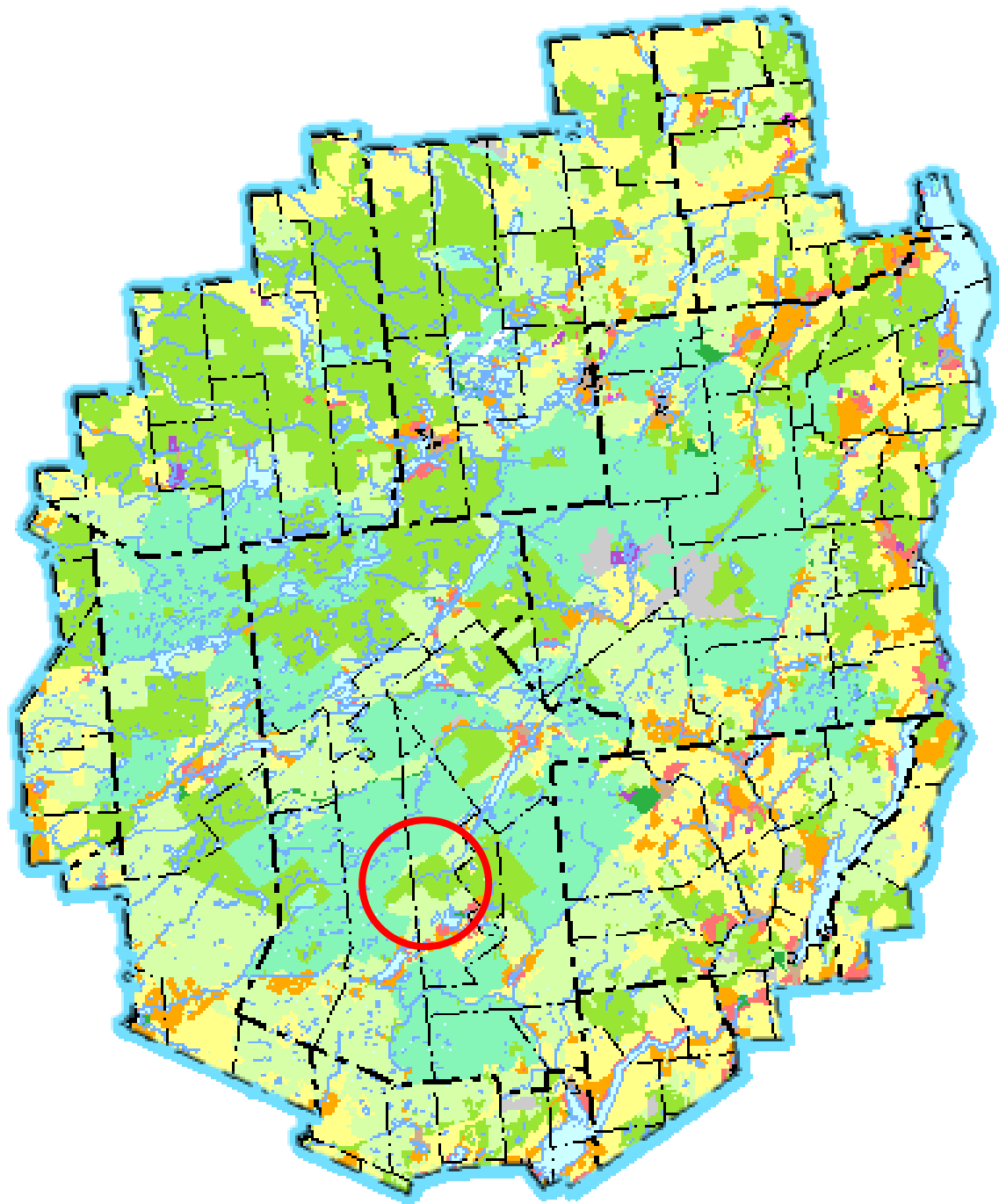
- Primary Paved Road
- Gravel Road
- Secondary Road
- Unimproved Road
- Powerline
- Railroad
- Trail
- Other

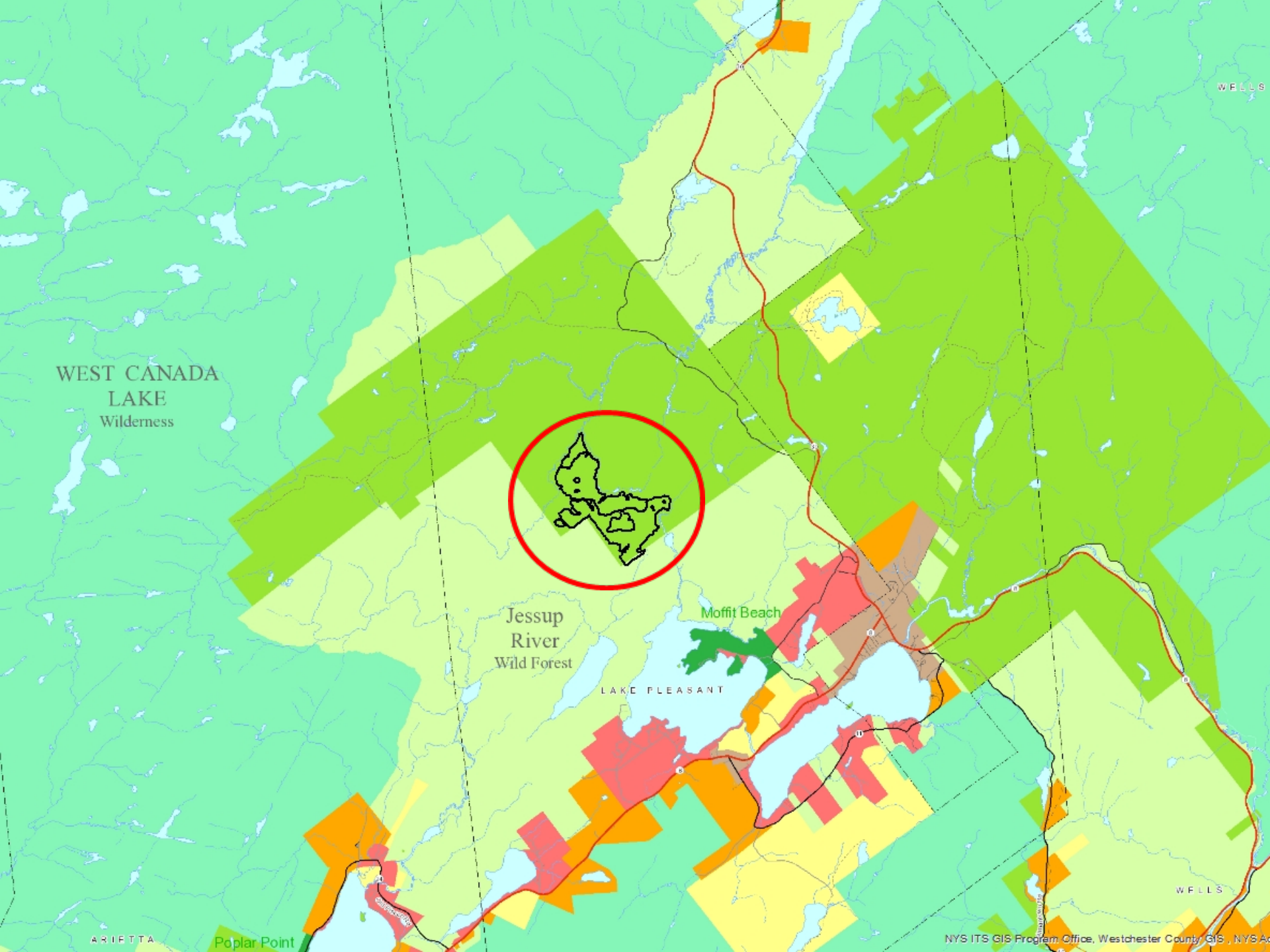


# Project Site









WEST CANADA  
LAKE  
Wilderness

Jessup  
River  
Wild Forest

LAKE PLEASANT

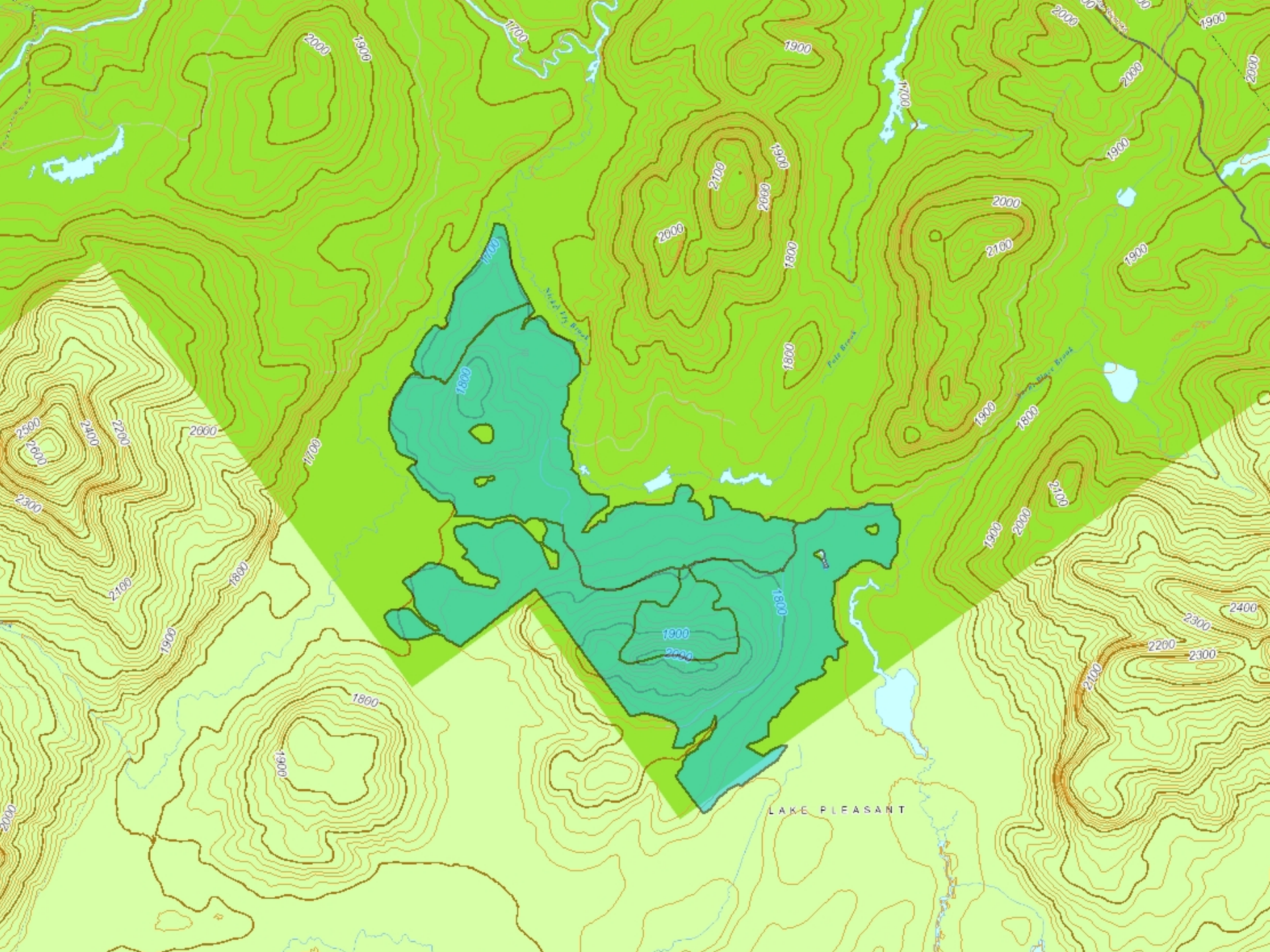
Moffit Beach

Poplar Point

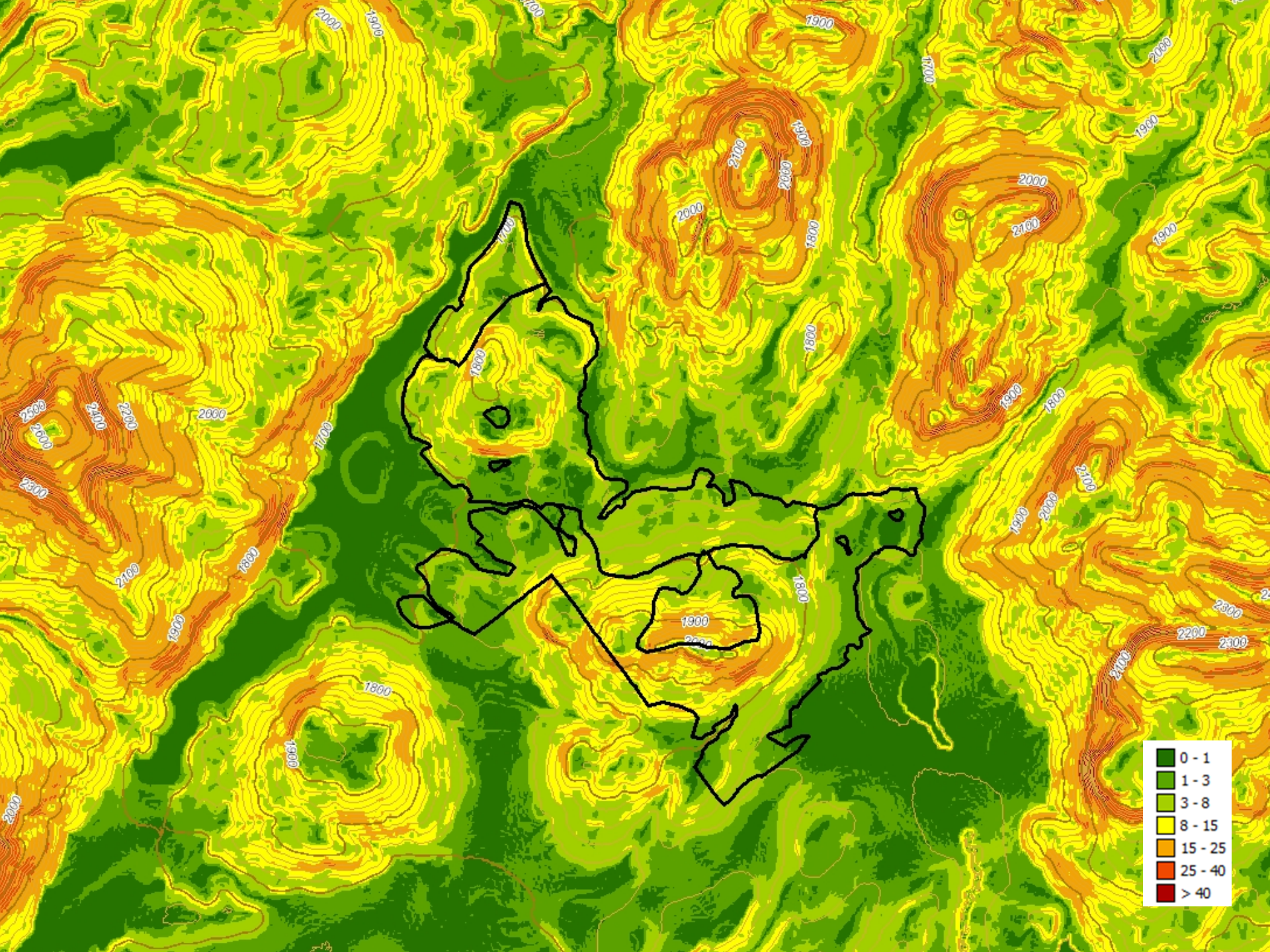
ARIETTA

NYS ITS GIS Program, Office, Westchester County GIS, NYS Arc

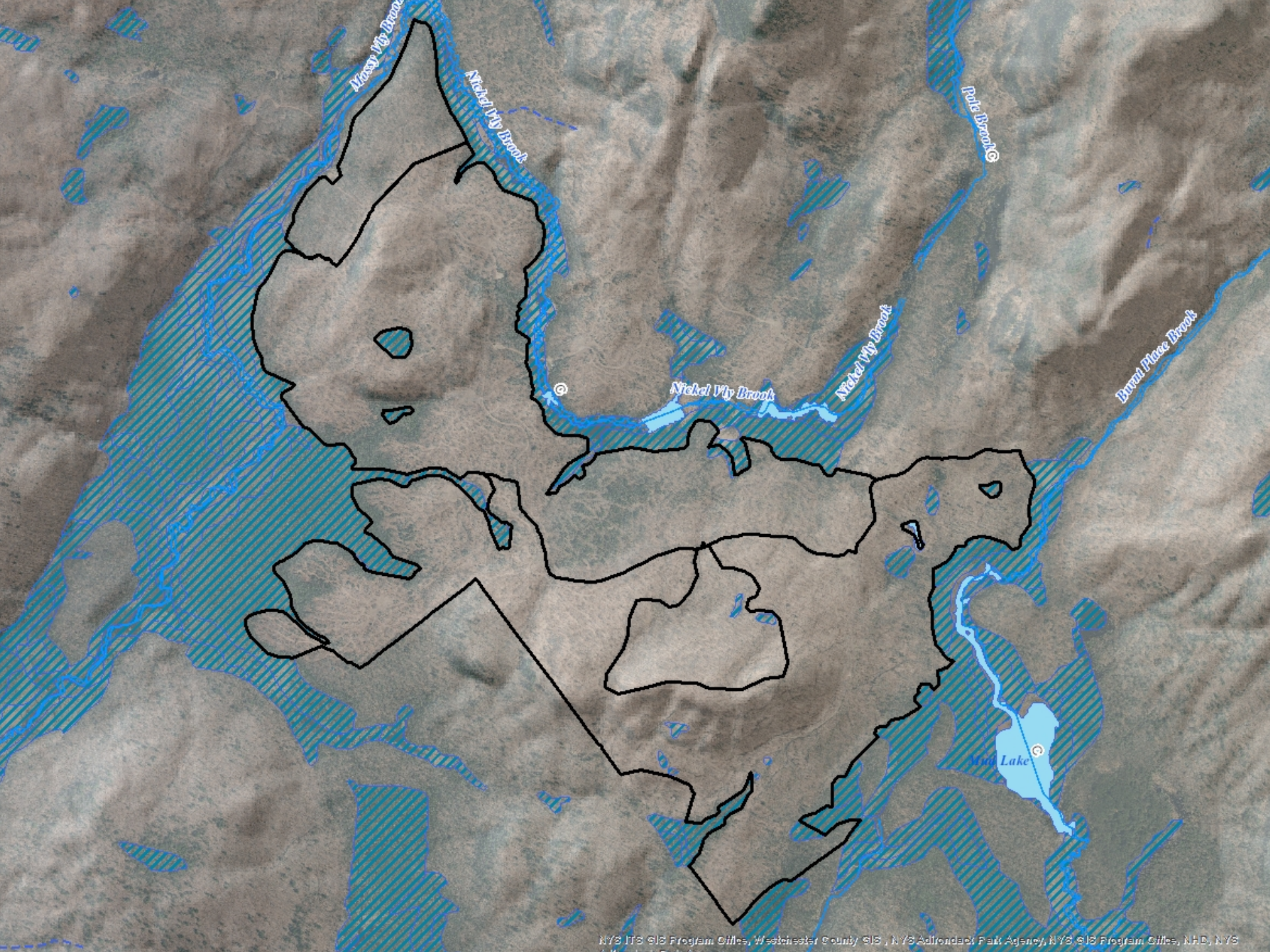




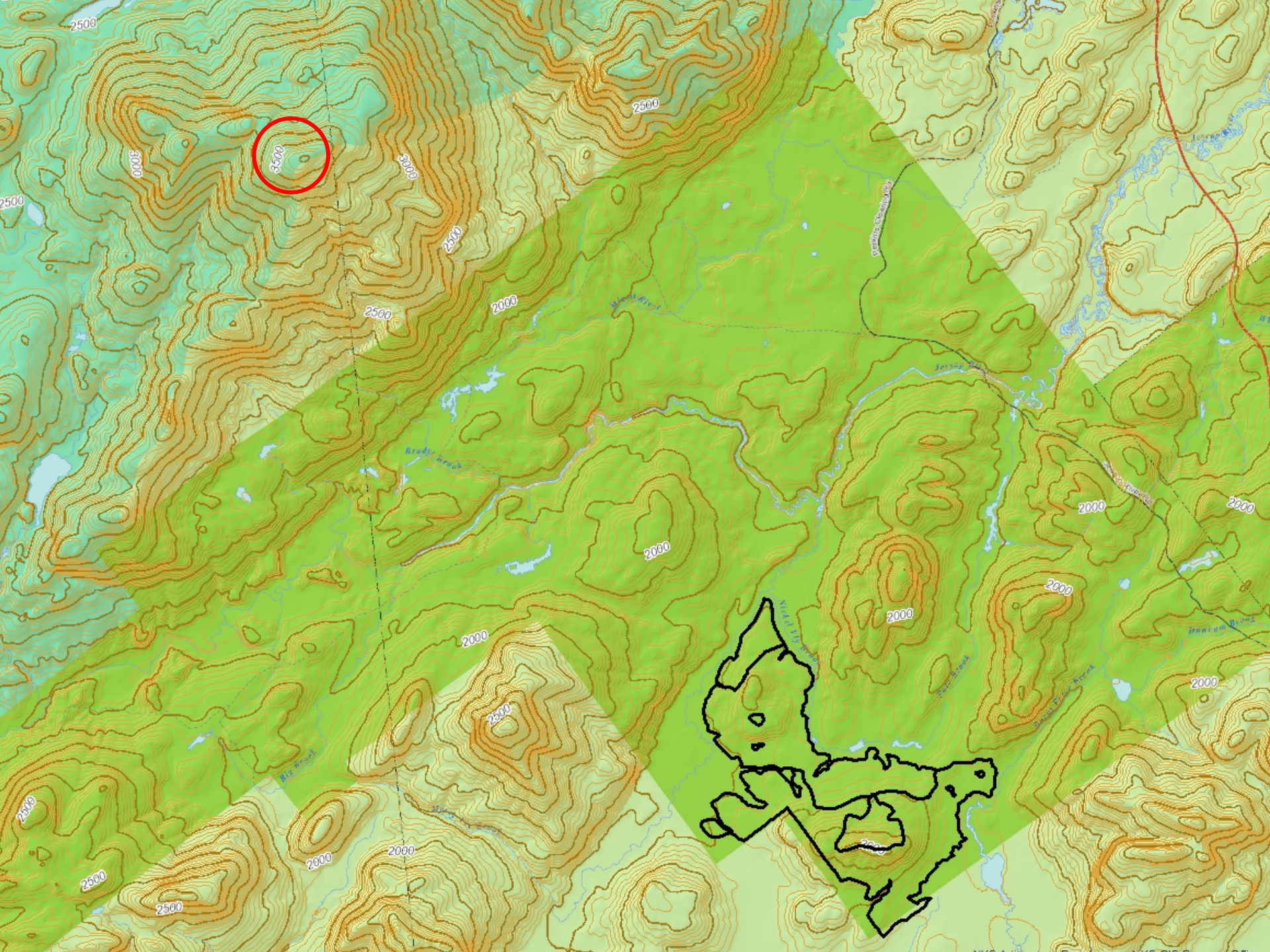














# Silvicultural Treatments



# Silvicultural Treatments : 1

Shelterwood Removal with Reserves (721± acres)

Stand Conditions:

- Overstory → 58 ft<sup>2</sup>/ac.; Mixed Northern Hardwoods (sugar maple, white ash, yellow birch, red maple, beech red spruce, black cherry). 66% is acceptable growing stock. 33% is unacceptable growing stock;
- Advanced regeneration (1-4" dbh): 1600 stems/acre (56% beech, 16% yellow birch)
- Seedlings (<1" dbh): 8000 stems/acre (28% sugar maple, 22% red maple, 15% beech)

# Silvicultural Treatments : 1

Shelterwood Removal with Reserves (721± acres)

Harvest Goals:

- Release a young age class of healthy, desirable species. Remove overstory stems removed to provide sunlight and resources to understory;
- Reserve trees selected from yellow birch, sugar maple, white ash, red spruce, red maple and black cherry stems to provide future seed source.

# Silvicultural Treatments : 2

Free Thinning (102± acres):

Stand Conditions:

- Overstory → 110 ft<sup>2</sup>/ac.; sugar maple, white ash, beech, yellow birch, red maple, and red spruce;
- Understory → Not surveyed –regeneration is not the focus of this treatment.

# Silvicultural Treatments : 2

Selection Thinning (134± acres):

Harvest Goals:

- Provide ideal growing conditions for healthy, vigorous crop trees.
- Remove mature and and unacceptable growing stock displaying poor form, disease, canker and dying tops.
- Target residual basal area is 70 ft<sup>2</sup>/acre





07.14.2022

























07.14.2022











# Review Standards



## Review Standards - 573.7(d)

- the clearcutting is for a recognized silvicultural purpose;
- there are adequate buffers on the shorelines of lakes, ponds, rivers or streams; along major travel corridors, and, if necessary, around dwellings on adjacent lands, so as to preserve water quality and visual quality and to control noise;
- habitats of rare and endangered species and other key wildlife habitats will be protected;

# Review Standards

- regeneration of timber is assured;
- if proposed, and if allowed by the agency, any use of pesticides and herbicides will be strictly controlled;
- harvest will be controlled by qualified personnel by contract, marked stand, direct supervision, or other adequate means;

# Review Standards

- wood roads and skid trails will be located, and equipment will be operated, so as to minimize erosion on slopes and elsewhere;
- the storage, mixing, or bulk handling of fuel, chemicals, or other hazardous materials will be strictly controlled;
- the latest edition of the New York State Forestry Best Management Practices for Water Quality: BMP Field Guide will be adhered to, at a minimum.

# Public Comment

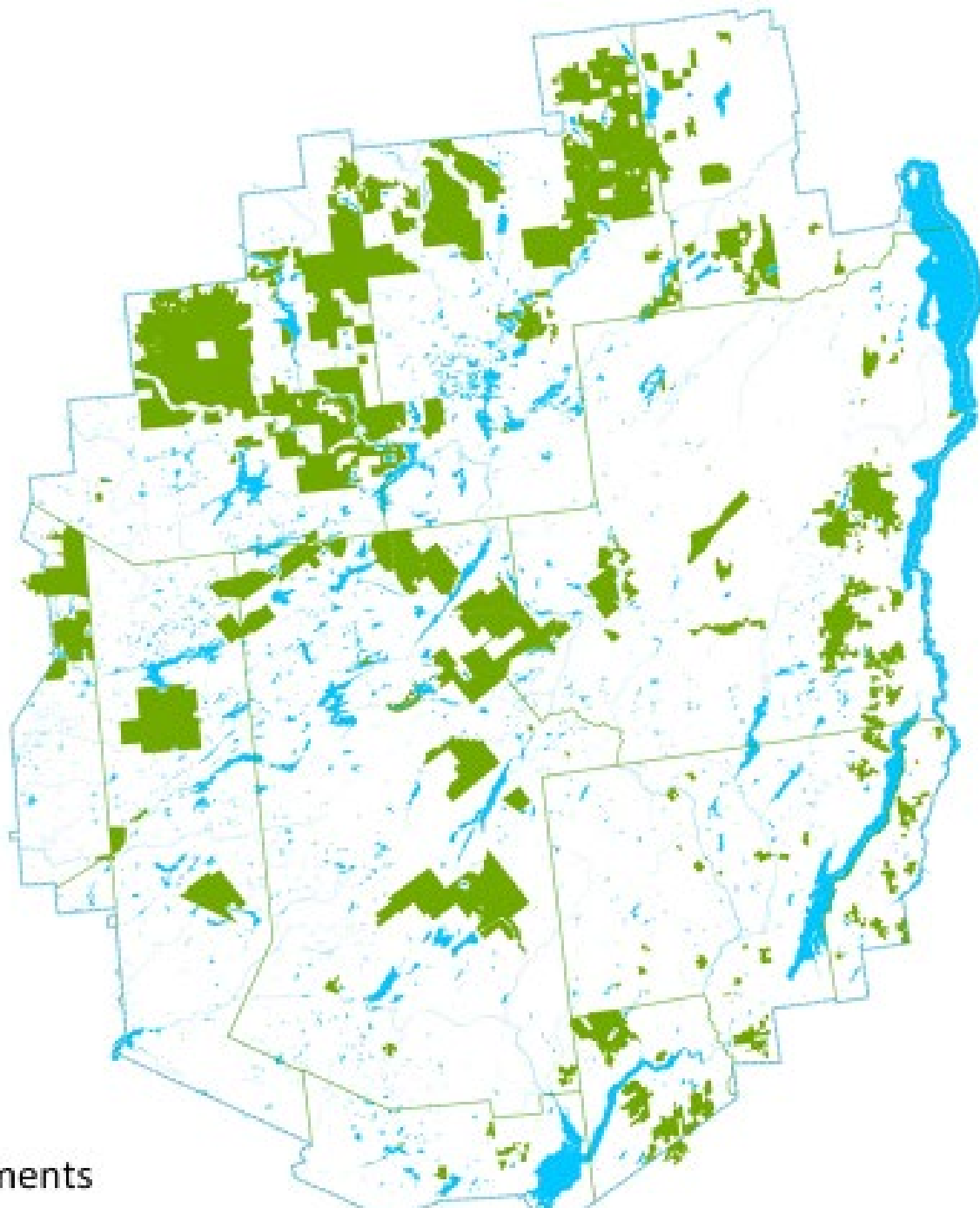






**P2022-0163**  
**Lyme Timber Company**

**Staff Recommendation**  
**Approve with Conditions**



New York State  
Conservation Easements



# Third Party Certification

## Forest Stewardship Council (FSC) Sustainable Forestry Initiative (SFI)

- Conservation of biological diversity; protection of species at risk
- Maintenance of soil and water resources
- Ensure sustainable harvest levels
- Reforest harvested areas; and protect from deforestation and land use conversion
- Protect and maintain special sites (biological and cultural)
- Require third party audit
- Require public disclosure